

CADILLAC GRANITO PVT. LTD.

Survey No.140/2p1.140/2p2.140/3, B/H.66KV Sub. Station,
Halvad Road At.Unchi Mandal, Morbi 363642. (Gujarat) INDIA,

+91-9512300022, +91-9512300023, +91-9512300024

cadillacgranito@gmail.com

www.cadillacgranito.com

Customer care :

+91-9512300034

Follow us.



**Delight
Future**

**VITRIFIED TILES
600x600 mm**

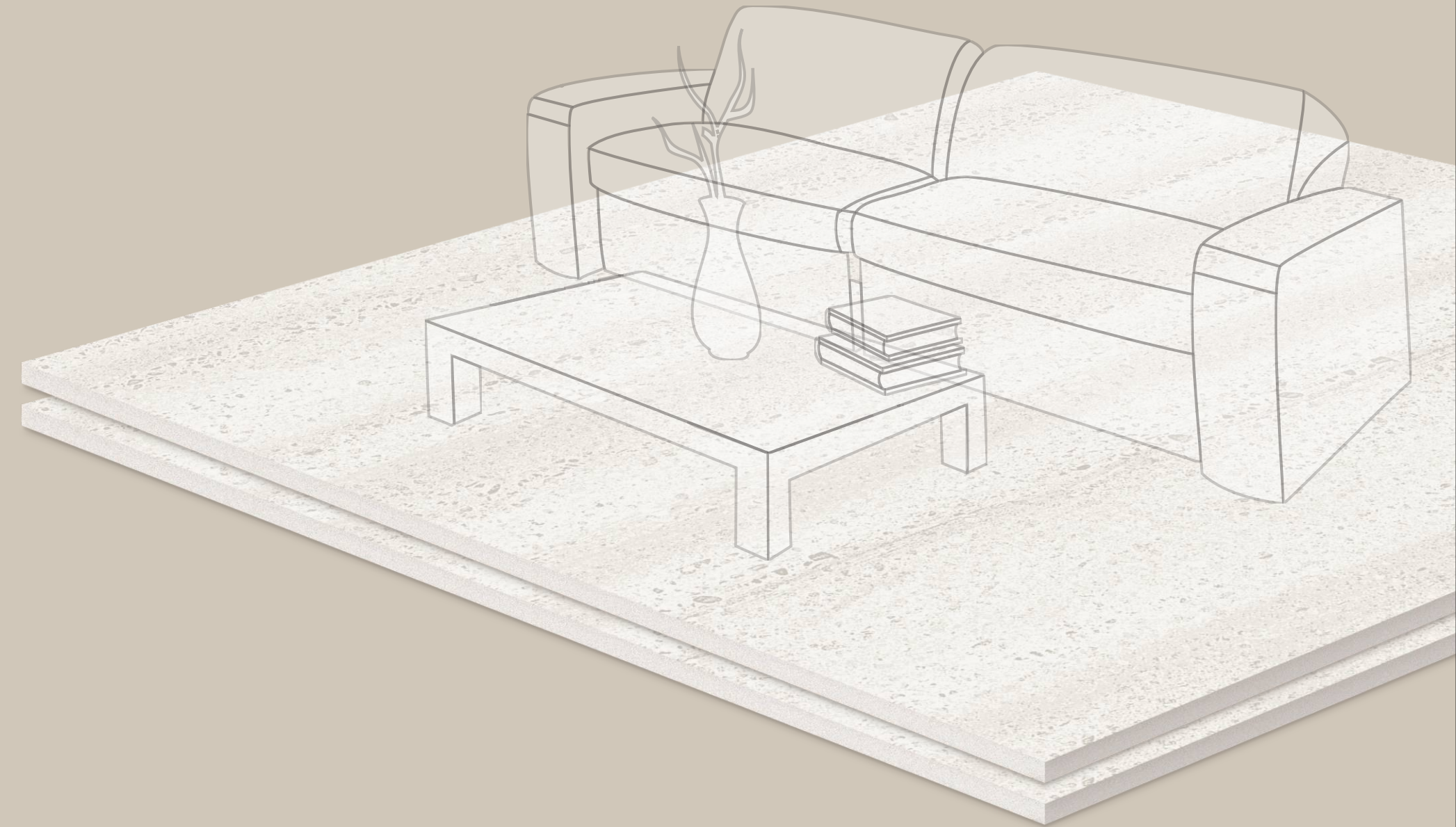


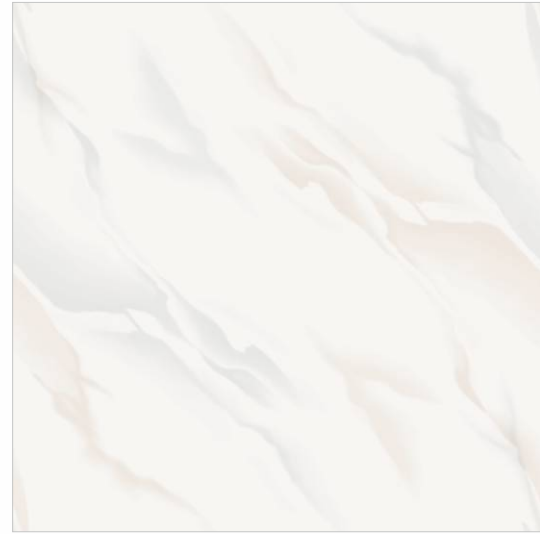
About us...

Cadillac Granito vision is to be known as the industry leader in Ceramics through setting industry standards for excellence in the services as well as product we provide. We will constantly be tuned to our customer's needs through our flexibility, innovation and commitment to outstanding overall customer service. It is our way of staying update with the world trends and coming up with outstanding tiles that meet the taste of modern consumers. This season, under the drive of bringing some exciting products, the new range of impressive Vitrified tiles is just around the corner. Have a glimpse of the complete.

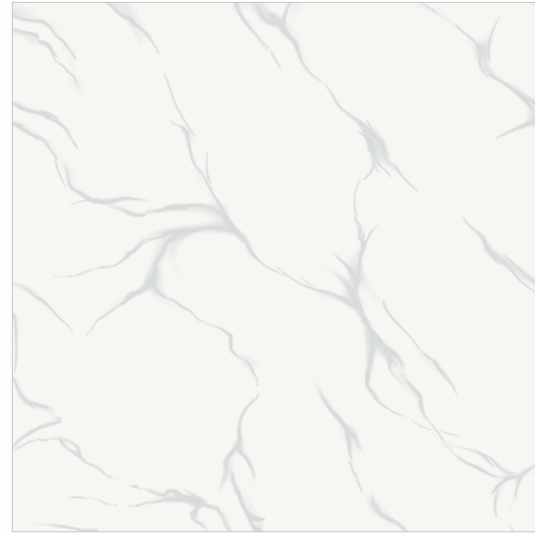
Cadillac Collection and make you choice. World class ceramic Nano Polished and Glaze Vitrified Tiles to meet the demand of market,

Cadillac Granito is today Recognized for its innovation & improvement. To establish Cadillac Granito as a market leader in whichever product we manufacture by providing our customer what

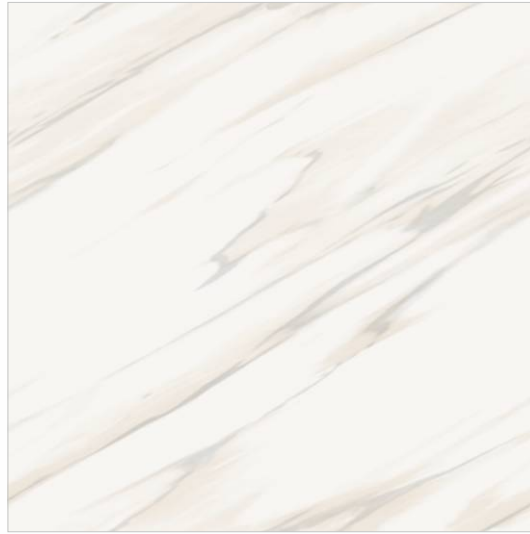




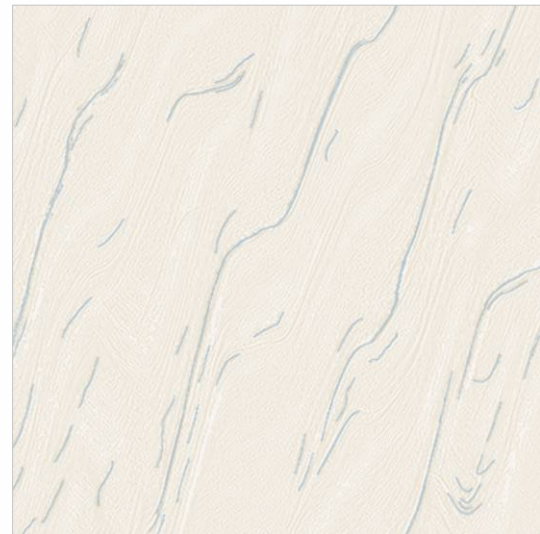
CL-1001



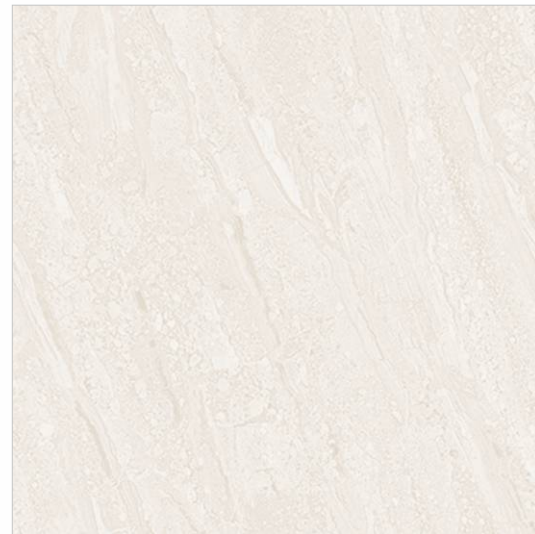
CL-1002



CL-1003



CL-1004



CL-1006

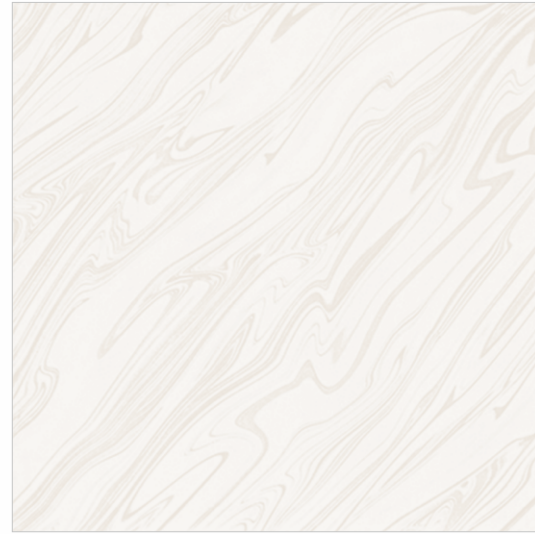


CL-1009

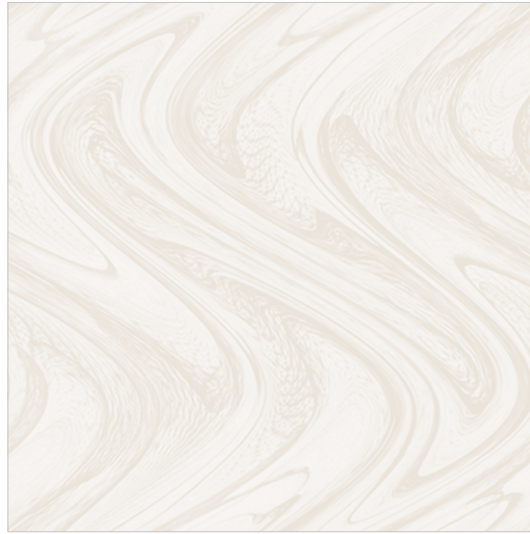




CL-1010



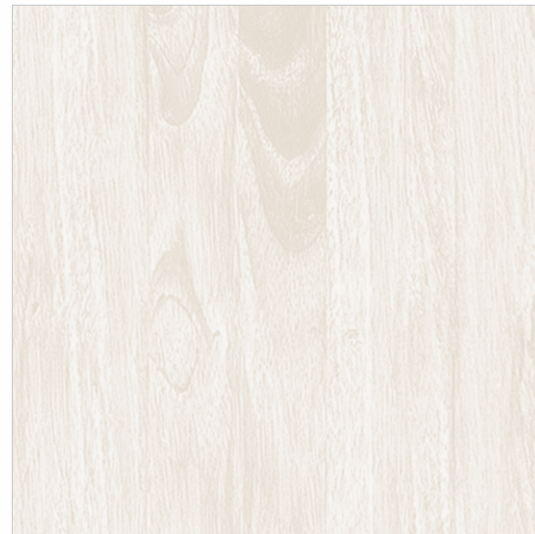
CL-1011



CL-1012



CL-1013



CL-1014



CL-1015



ANTI FREEZE



DEEP ABRASION
RESISTANCE



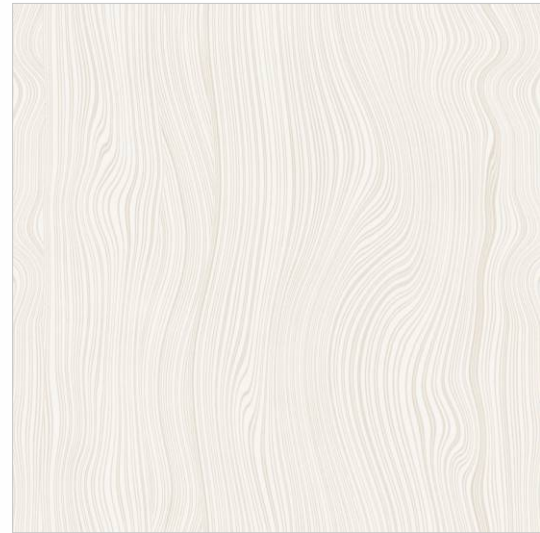
CHEMICAL
RESISTANCE



BREAKING
STRENGTH



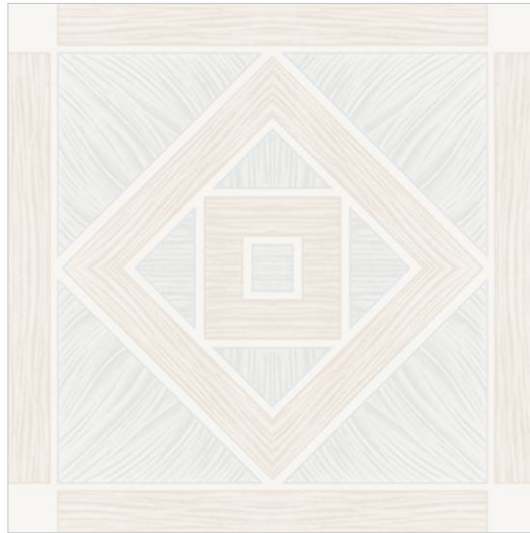
ANTI SKID



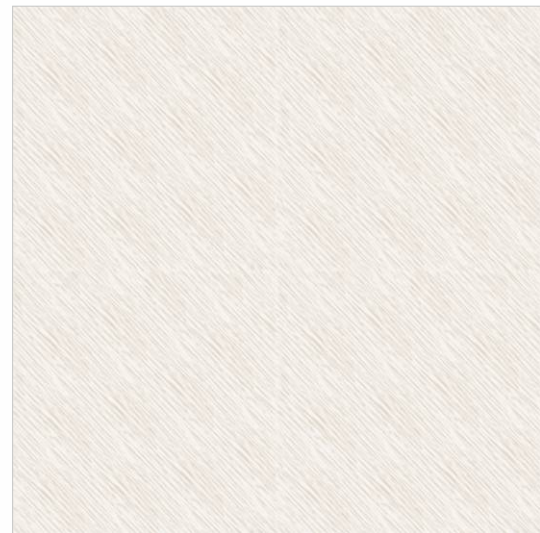
CL-1016



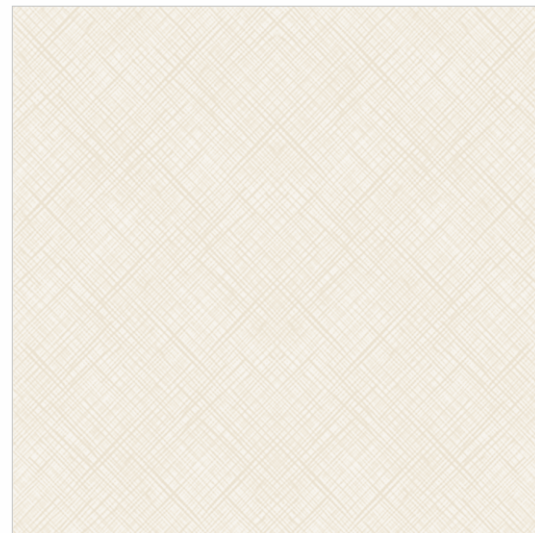
CL-1017



CL-1018



CL-1019



CL-1021



CL-1022



ANTI FREEZE



DEEP ABRASION
RESISTANCE



CHEMICAL
RESISTANCE



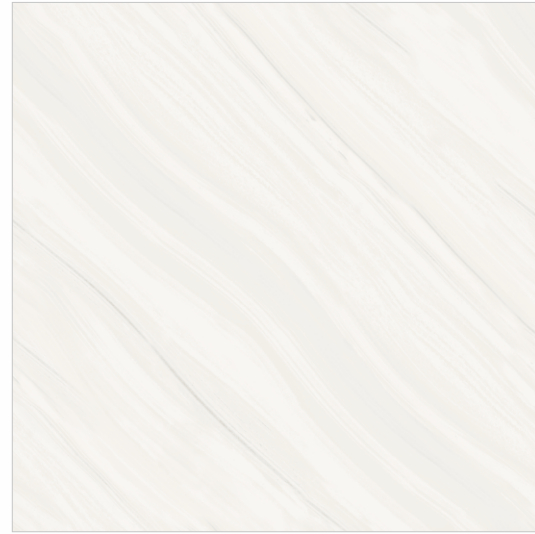
BREAKING
STRENGTH



ANTI SKID



CL-1023



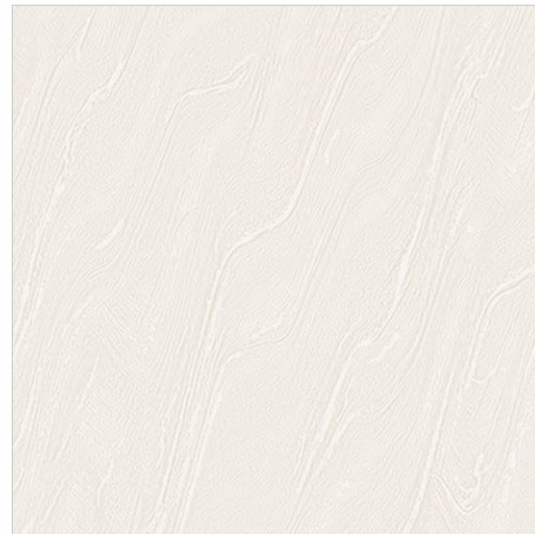
CL-1024



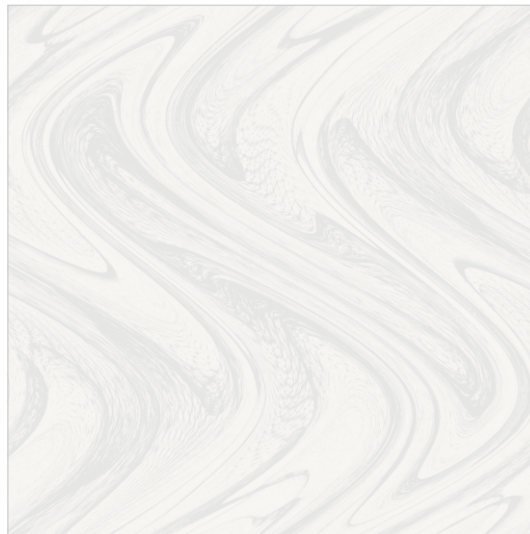
CL-1025



CL-1026



CL-1027



CL-1028



ANTI FREEZE



DEEP ABRASION
RESISTANCE



CHEMICAL
RESISTANCE



BREAKING
STRENGTH

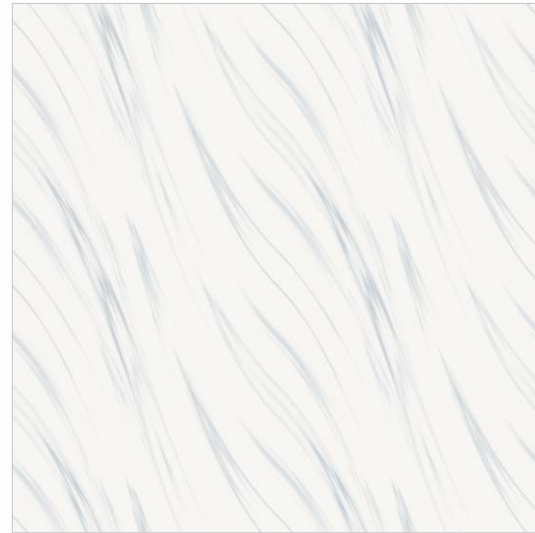


ANTI SKID





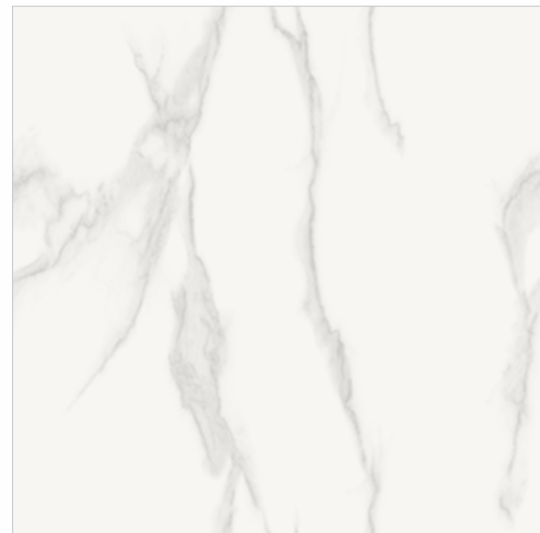
CL-1029



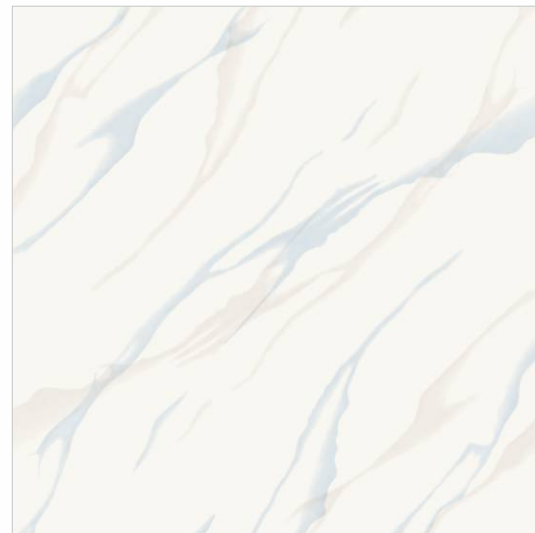
CL-1030



CL-1031



CL-1032



CL-1035



CL-1036





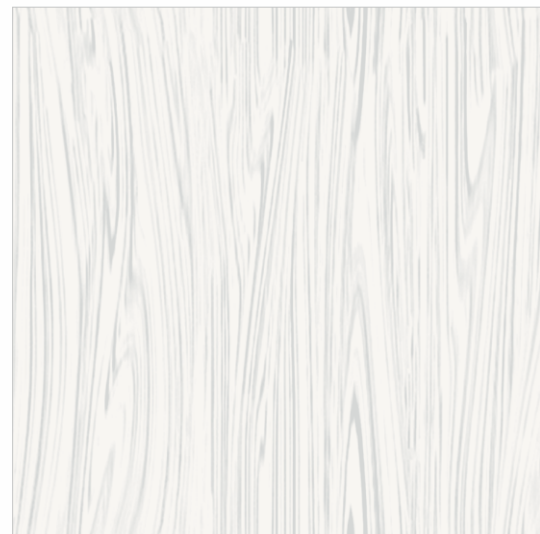
CL-1037



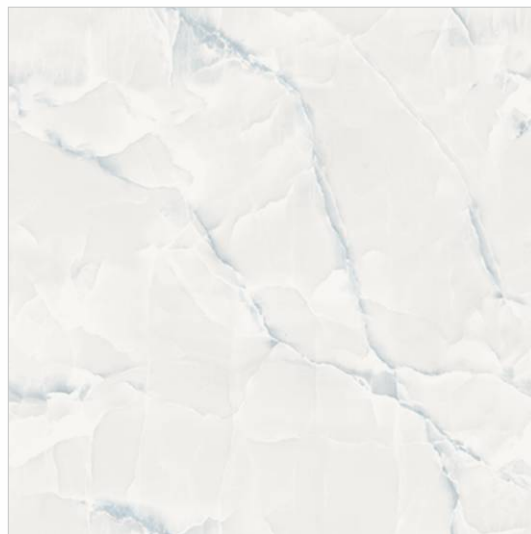
CL-1038



CL-1039



CL-1040



CL-1041



CL-1042



ANTI FREEZE



DEEP ABRASION
RESISTANCE



CHEMICAL
RESISTANCE



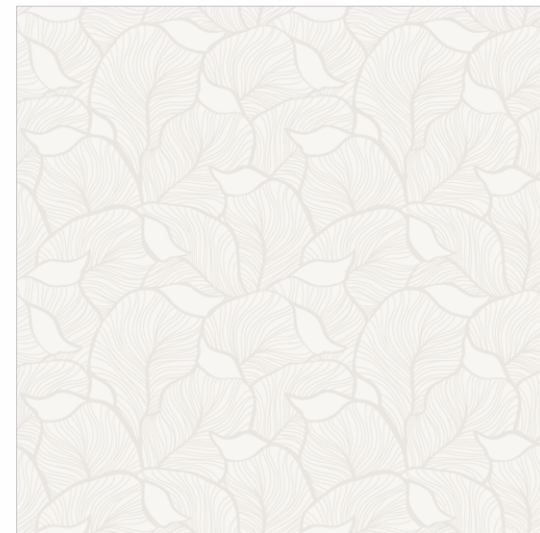
BREAKING
STRENGTH



ANTI SKID



CL-1043

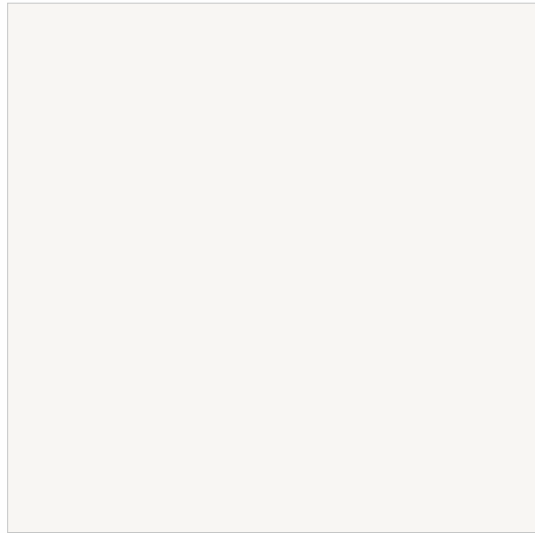


CL-1044

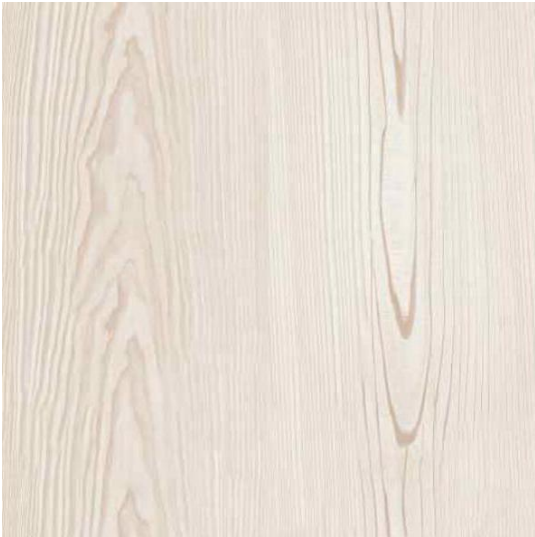




CL-1045



Ivory



CL-1046



CL-1008

Technical Specification

No.	PROPERTY	International Std. ISO 13006/EN 176 Group Bla	OUR VALUE	Method Of Testing
1.	Deviation in Length	± 0.6%	± 0.1%	EN 98
2.	Deviation in Thickness	± 0.5%	± 0.1%	EN 98
3.	Straightness of Sides	± 0.5%	± 0.1%	EN 98
4.	Rectangularity	± 0.6%	± 0.2%	EN 98
5.	Surface Flatness	± 0.5%	± 0.2%	EN 98
6.	Water Absorption*	< 0.5%	< 0.05%	EN 99
7.	Mohs Hardness*	> 6	> 8	EN 101
8.	Flexural Straightness*	> 27 N/mm ²	> 47 N/mm ²	EN 100
9.	Abrasion Resistance	< 204 mm ²	< 144 mm ²	EN 102
10.	Skid Resistance (Friction Coefficient)	> 0.4	> 0.6	ASTM C-1028
11.	Breaking Strength*	1113 N	2600 N	ASTM C-648
12.	Density (g/cc)	> 2	2.4	DIN 51082
13.	Frost Resistance	Frost Proof	Frost Proof	EN 202
14.	Chemical Resistance	No Damage	No Damage	EN 106
15.	Thermal Shock Resistance	No Damage	No Damage	EN 104
16.	Colour Resistance	No Damage	No Damage	DIN 51094
17.	Thermal Expansion	< 9 x 10-6	< 6 x 10-6	EN 103
18.	Stain Resistance	Resistance	Resistance	ISO 10545-14
19.	Moisture Expansion	Nil	Nil	ISO 10545-10
20.	Glossiness	-	>90	Glossmeter

Note : Colours shown are as accurate as the limitations of the printing process will allow. Prospective customers are advised to inspect a sample of the tile before ordering. Every effort has been made to ensure the accuracy of the information given. However, the company reserves the right to change the specifications without prior notice.

PACKING DETAIL

Size	No. of Tiles per Box	Coverage Area in Sq. Mt.	Approx Weight / Box
600 x 600 mm	4 pcs.	1.44 Sq. Mtr.	27.5 Kgs.

APPLICATIONS

